



# KIWI – KNOWLEDGE IN A WIKI

DL  
Theory consistency  
ontologies classical logic  
reasoning explanation

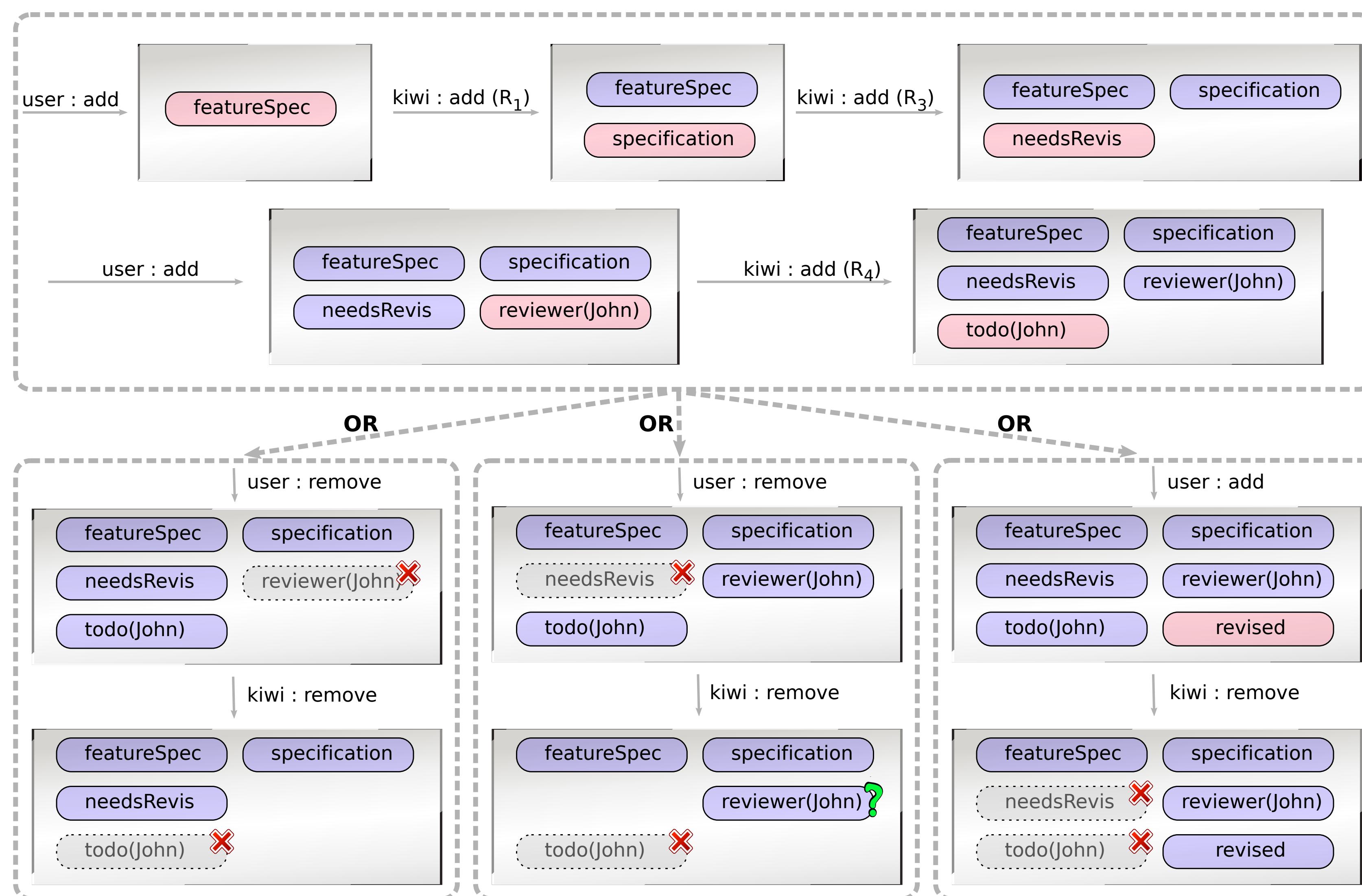
## Towards reasoning and explanation for social tagging

<http://www.pms.ifi.lmu.de/publikationen#PMS-FB-2008-2>

$featureSpecification(x) \rightarrow specification(x)$   $R_1$   
 $componentSpecification(x) \rightarrow specification(x)$   $R_2$   
 $specification(x) \wedge \neg revised(x) \rightarrow needsRevision(x)$   $R_3$   
 $needsRevision(x) \wedge reviewer(x,r) \rightarrow todo(x,r)$   $R_4$

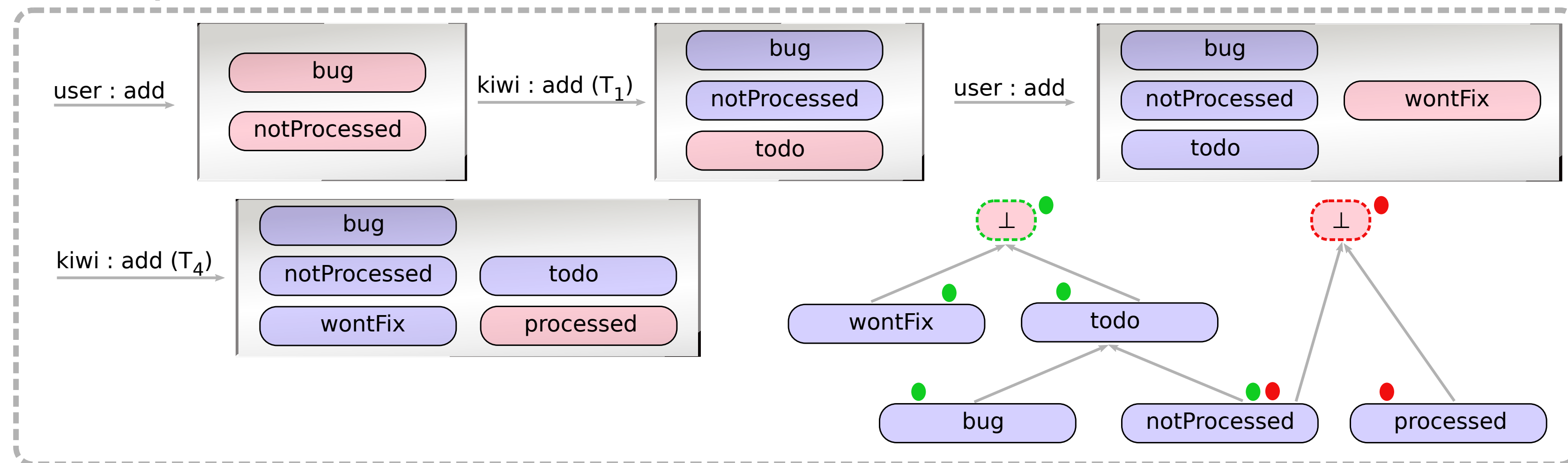
Logical theory  
Strong semantics

### Example 1



Conceptual model

### Example 2

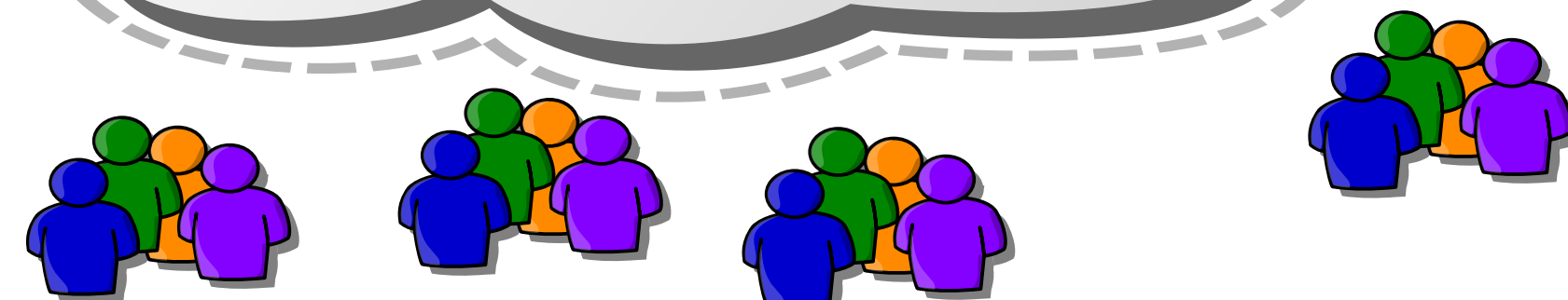


Thesaurus

Taxonomy

Weak semantics

folksonomy  
Practice RDF XML  
del.icio.us artigo flickr  
wiki sharing social  
tagging inconsistency



www.kiwi-project.eu

University of Munich, Institute for Informatics  
François Bry  
T +49.89.2180-9310  
bry@lmu.de

Jakub Kotowski  
T +49.89.2180-9339  
Jakub.Kotowski@ifi.lmu.de

Information  
info@kiwi-project.eu  
<http://www.kiwi-project.eu>  
<http://planet.kiwi-project.eu>

Project Number: 211932  
Budget: 3,8 Million Euro  
Start Date: 2008-03-01  
Duration: 36 months

The research leading to these results has received funding from the European Community's Seventh Framework Programme (FP7/2007-2013) under grant agreement No. 211932.

